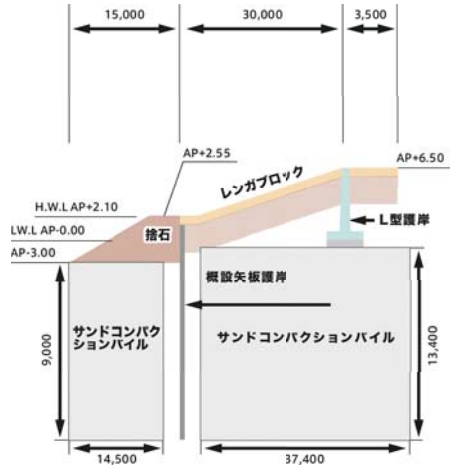


高潮防潮施設 FACILITIES TO PREVENT DAMAGES FROM FLOODS AND HIGH TIDES

締めめ砂杭（サンドコンパクションパイル）などの地盤改良により、密度増大を図り、液状化抵抗を増大して対応しています。

As a result of our hardened sand compaction piles and other foundation improvements, we have improved the density of the soil layers in order to make them resist liquefaction as well as possible.

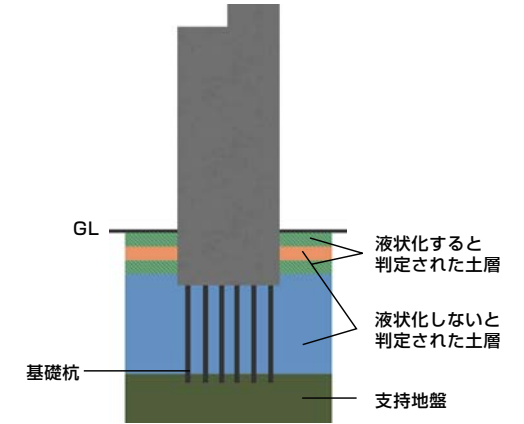


建築物の安全対策

BUILDING SAFETY

建築物は耐火構造で、支持地盤まで基礎杭を打設するなど、安全に造られています。臨海副都心は大規模な延焼火災のおそれなく、広域的な避難を要しない地区であるため、臨海副都心は地区内残留地区となっています。

Buildings feature fireproof construction, and were built with safety in mind from the foundation up. There is little chance of a large scale fire spreading throughout the waterfront city center, and the area is not one in which wide area evacuations are usually called for. This allows residents and businesses to remain where they are in the case of a disaster.

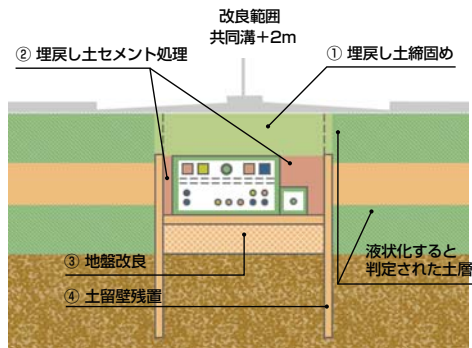


共同溝

SHARED DRAINAGE SYSTEMS

道路、公園等の地下空間には、関東大震災級の地震にも耐えることができる共同溝を整備しています。上下水道・電気・ガス・情報通信などのライフライン収容する共同溝では、地盤改良や地中壁による液状化対策を行っています。

In the space under roads, parks, and other places, multipurpose underground utility conduits capable of withstanding the force of an earthquake comparable to the Great Kanto Earthquake of 1923 are installed and maintained. Water and sewage systems, electricity, gas, and telecommunications, among other critical utility service lifelines, are all protected through this system, with our foundation improvements and underground wall construction also preventing any liquefaction issues.



- ・埋戻し土を締め固めや固化により改良し、液状化抵抗を増大(①、②、③)
- ・共同溝両側の地中壁により、振動・変動を抑制し、液状化を防止 (④)

有明の丘防災拠点等

ARIAKE-NO-OKA DISASTER PREVENTION AREA

有明の丘防災拠点は、地震などの災害が発生した場合に隣接する港湾機能などを活用して、臨海副都心はもとより、広域的な災害対策活動の支援基地としての重要な機能を担うこととなっています。シンボルプロムナード等の多くのオープンスペースは、災害発生時には一時的な避難場所、仮設住宅の建設場所、物資の集積地となります。

The Ariake-no-Oka Disaster Prevention Area is a space which makes use of the adjoining harbor facilities in order to fulfill important functions to support the waterfront city center and other parts of the surrounding area at large in the case of an earthquake or other disaster. There are a number of large open spaces, such as the Symbol Promenade, which can be used as evacuation sites in a disaster, as well as a location for the construction of temporary dwellings, and accumulation of materials.

